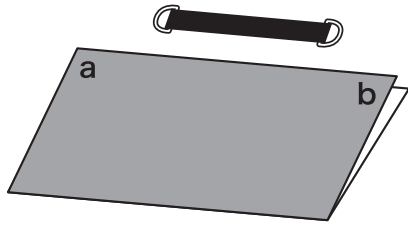
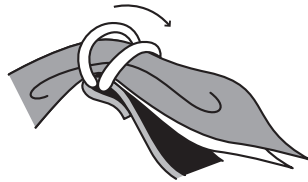


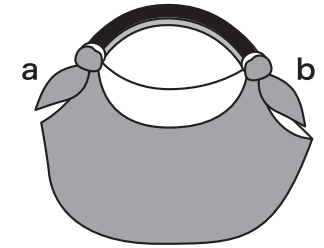
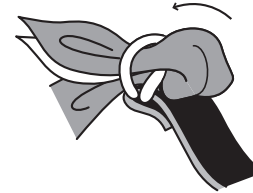
Someco Style 1



Fold the cloth in half.

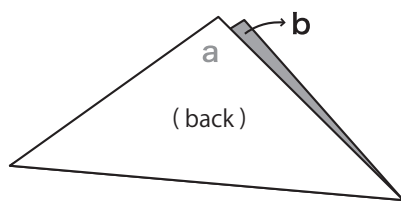


Insert **a** through one side of the Someco ring as per illustration.

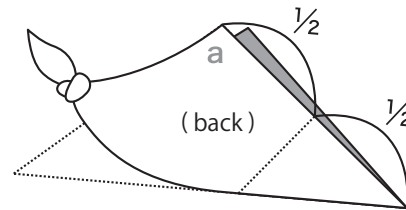


Insert **b** through the other ring as **a**.

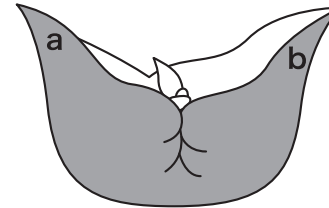
Someco Style 2



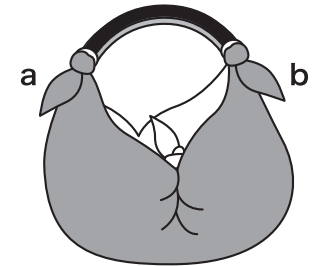
Fold the cloth into a triangle with the front side inward.



Take one corner of the base of the triangle. Measure half way to the top and tie that corner into a knot. Repeat procedure for the other side. Do not tie the top corner. You should have only two knots.



Hold both **a** and **b**, and turn the cloth inside out so that the front side faces outward.



Insert Someco as in **a** and **b**.

Someco Style 3



Make use of your eco-bag.



Insert Someco into your eco-bag, and it becomes a shoulder bag.

There are many other ways to use Someco than what we have shown here. Be creative and discover your own Someco Style!
Visit our web site for more information.

LLC. Shine corporation.
<http://www.someco.info/>